



ESSELMANN

# THE FT5.

THE NEW COOLING TRAILER.

THE NEW PRICE-PERFORMANCE REFERENCE.



corresponds  
to ATP standard  
level „IN“

Also  
available as

## FT4

more payload  
at more compact  
dimensions

### AS STANDARD WITH:

- ✓ **SPLITCHILL®** cooling, the easy-to-maintain and repair-friendly refrigeration unit, with electronic refrigeration control and electric defrost heating
- ✓ rear entry step
- ✓ stable stainless steel rear portal with full loading width
- ✓ ESSELMANN **FePur®** isothermal body with robust anodised aluminium profiles and manoeuvring handles
- ✓ including registration documents **[CoC paper]**
- ✓ Space for five Euro pallets (1,200x800mm)

### OPTIONALLY AVAILABLE:

- ESSELMANN **SPLITCHILL®** refrigeration unit in performance-enhanced tropical version for use at up to 43°C outside temperature at 40% higher cooling capacity
- load securing with lock bars
- LED vehicle lighting
- Lettering in digital print full foiling on sides and rear
- 100 km/h preparation
- Height-adjustable draw gear
- synthetic floor coating and lateral ram protection made of anodised aluminium checker plate

	FT5	FT4
Overall outer dimensions (LxWxH)	5,250x2,450x2,610mm	4,950x2,450x2,610mm
Interior body dimensions (LxWxH)	3,400x1,820x1,940mm	3,100x1,820x1,940mm
Empty weight approx.	1,040kg	1,000kg
Perm. gross weight	2,700kg	2,700kg
Payload in transport approx.	1,660kg	1,700kg
Payload in operation approx.	6,000kg	6,000kg

from **7,615.- €\***



ESSELMANN

**Robust.** Flush stainless steel rear portal with reinforced corners. Extra sturdy, durable, and recoil-free.

1

**Digital.** Electronic refrigeration control and electric defrost heating.

2

**Wide.** Trailer with 1,820 mm interior width. Sufficient space even with beverage crates that are not euro-pallet compliant.

3

**Smart.** The boarding aid at the rear makes it easier to enter the trailer.

4

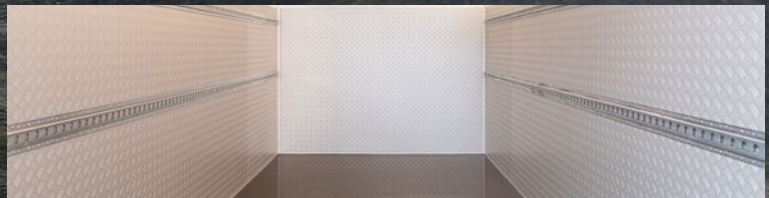
**Practical.** Anodised aluminium bodywork profiles with manoeuvring handles.



**LED vehicle lighting.**

More safety due to the bright and long-lasting LED lighting. No change of illuminant.

Surcharge only 280.-€\*



**Synthetic floor coating.** As a wear-resistant, slip-proof and absolutely leak-proof surface coating.

**Impact protection made of anodised aluminium checker plate.** On the inside walls of the box and rear door(s) approx. 1,200mm high, all-round

Surcharge only 1,035.- €\*



**Bumper protection made of stainless steel sheet.**

for outline, marker and rear lights.

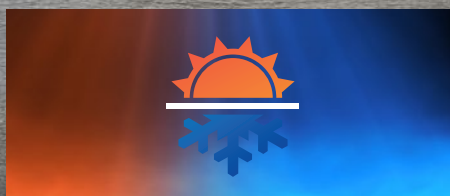
Surcharge only 160.-€\*



**Full-surface digital print lettering.**

Stand out and label your trailer expressively.

surcharge only 975.-€\*



**COOLING UNIT IN TROPICAL VERSION UP TO 43°C**

Be prepared for persistent summer heat and use the high-performance cooling units in tropical version.

Surcharge only 610.-€\*



100

**100 km/h preparation**

A more stable ride, thanks to 100 km/h preparation.

Surcharge only 210.-€\*

© Esselmann Fahrzeugbau GmbH & Co. KG

Subject to change without prior notice | Illustrations may contain special equipment.

\*The prices shown are net prices and do not include the statutory value-added tax. Delivery ex works. Offer subject to confirmation. Status October 2021

Esselmann Fahrzeugbau GmbH & Co. KG | Oberster Kamp 21 | 59069 Hamm | Germany  
+49 (0) 23 85 / 708 708-0 | [www.esselmann.de](http://www.esselmann.de) | [info@esselmann.de](mailto:info@esselmann.de)