



ESSELMANN

# THE FT2.

THE ERGONOMIC COOLING TRAILER.

EASY TO MANOEUVRE WITH 2 METER INTERIOR  
HEADROOM.



## Always well chilled.

With **FePur®** isothermal body for optimal insulation and **SPLITCHILL®** cooling, the easy-to-maintain and repair-friendly refrigeration unit.

## AS STANDARD WITH:

- ✓ electronic refrigeration control
- ✓ electric defrost heating
- ✓ ESSELMANN **SPLITCHILL®** cooling unit
- ✓ stable stainless steel rear portal with full loading width
- ✓ ESSELMANN **FePur®** isothermal body with robust anodised aluminium profiles and manoeuvring handles
- ✓ including registration documents [**CoC paper**]
- ✓ Space for two Euro pallets (1,200x800mm)

Overall outer dimensions:  
approx. L/W/H 3,900 x 1,800 x 2,500 mm  
Interior body dimensions:  
approx. L/W/H 2,620 x 1,270 x 1,940 mm

Empty weight	approx.	630 kg
Perm. gross weight		1,350 kg
Payload in transport	approx.	720 kg
Payload in operation	approx.	4,000 kg

## OPTIONALLY AVAILABLE:

- Increase to 1,500 kg permitted gross weight
- Tropical version of the refrigeration system, for use up to 43°C outside temperature
- load securing
- LED vehicle lighting
- Lettering in digital print full foiling on sides and rear
- 100 km/h preparation

from **6,280.- €\***



ESSELMANN



**LED vehicle lighting.** More safety due to the bright and long-lasting LED lighting. No change of illuminant.  
Surcharge only 280.- €\*

1



**100 km/h preparation**  
A more stable ride, thanks to 100 km/h preparation.  
Surcharge only 210.- €\*

2



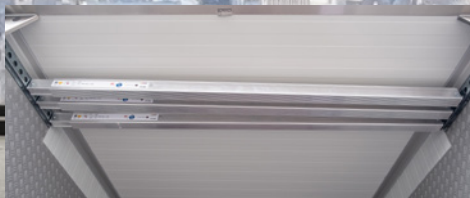
**Bumper protection made of stainless steel sheet.**  
for outline, marker and rear lights.  
Surcharge only 160.- €\*

3



**Preparation for load securing.**  
with 2 rows of perforated rails on both sides, transport bracket for locking bars under the inner ceiling.  
Surcharge only 325.- €\*

4



**Locking bar for load securing.**  
110.- €\* per piece

5



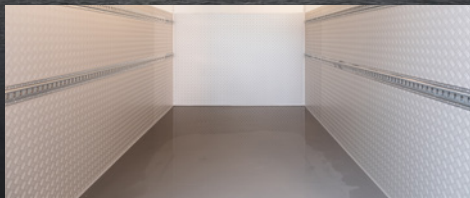
**Full-surface digital print lettering.**  
Stand out and label your trailer expressively.  
Surcharge only 725.- €\*

6



**AL-KO Profi Premium jockey wheel.**  
with integrated wheel load scale, always have a firm view on the permissible support load.  
Surcharge only 110.- €\*

7



**Synthetic floor coating.** As a wear-resistant, slip-proof and absolutely leak-proof surface coating.  
**Impact protection made of anodised aluminium checker plate.** On the inside walls of the box and rear door(s) approx. 1,200mm high, all-round  
Surcharge only 875.- €\*

8



**Increase of capacity AL-KO chassis**  
Car ball head hitch, AL-KO Profi Premium jockey wheel with support strut, 2-fold tires, load capacity according to the perm. gross weight, perm. gross weight 1,500kg.  
Surcharge only 210.- €\*

9

© Esselmann Fahrzeugbau GmbH & Co. KG

Subject to change without prior notice | Illustrations may contain special equipment.

\*The prices shown are net prices and do not include the statutory value-added tax. Delivery ex works. Offer subject to confirmation.  
Status October 2021

Esselmann Fahrzeugbau GmbH & Co. KG | Oberster Kamp 21 | 59069 Hamm | Germany  
+49 (0) 23 85 / 708 708-0 | [www.esselmann.de](http://www.esselmann.de) | [info@esselmann.de](mailto:info@esselmann.de)