



ESSELMANN

# THE FT1.

THE COMPACT COOLING TRAILER.

DRIVABLE WITH A CLASS B LICENSE AND

HIGHLY VERSATILE.



#### Always well chilled.

With **FePur®** isothermal body for optimal insulation and **SPLITCHILL®** cooling, the easy-to-maintain and repair-friendly refrigeration unit.

#### AS STANDARD WITH:

- ✓ electronic refrigeration control
- ✓ electric defrost heating
- ✓ ESSELMANN **SPLITCHILL®** cooling unit
- ✓ stable stainless steel rear portal with full loading width
- ✓ ESSELMANN **FePur®** isothermal body with robust anodised aluminium profiles and manoeuvring handles
- ✓ including registration documents **[CoC paper]**
- ✓ 270kg loading capacity with 750kg total weight
- ✓ Space for one Euro pallet (1,200x800mm)

Overall outer dimensions:  
approx. L/W/H 3,200 x 1,800 x 2,000 mm  
Interior body dimensions:  
approx. L/W/H 2,000 x 1,000 x 1,440 mm

Empty weight	approx.	390 kg
Perm. gross weight		750 kg
Payload in transport	approx.	360 kg
Payload in operation	approx.	1,000 kg

#### OPTIONALLY AVAILABLE:

- Tropical version of the refrigeration unit, for use at up to 43°C outside temperature
- load securing
- LED vehicle lighting
- Lettering in digital print full foiling on sides and rear
- 100 km/h preparation
- Intermediate shelf for more storage space

from **5,765.- €\***



ESSELMANN



**LED vehicle lighting.**

More safety due to the bright and long-lasting LED lighting. No change of illuminant.

Surcharge only 280.-€\*

1



**Intermediate shelf.**

slidable and removable, approx. LxW 965x995mm, max. capacity 30kg, shelf panel made of screen printing plate, fixation by ball catches and aluminium wall guide.

Surcharge only 250.-€\*

2

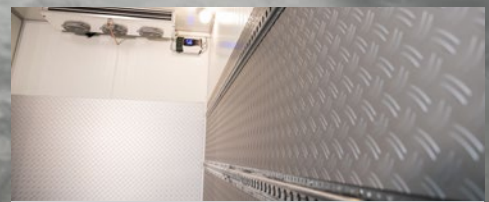


**Bumper protection made of stainless steel sheet.**

for outline, marker and rear lights.

Surcharge only 160.-€\*

3



**Preparation for load securing.**

with 2 rows of perforated rails on both sides, transport bracket for locking bars under the inner ceiling.

Surcharge only 325.-€\*

4



**Locking bar for load securing.**

110.-€\* per piece

5



**Full-surface digital print lettering.**

Stand out and label your trailer expressively.

Surcharge only 495.-€\*

6

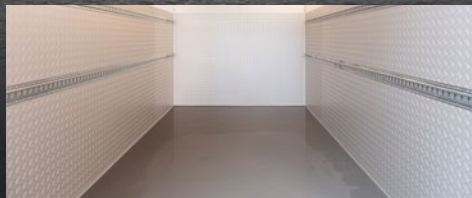


**Jockey wheel with PinStop function.**

Convenient parking aid for short term positioning of the trailer when loading and unloading.

Surcharge only 50.- €\*

7



**Synthetic floor coating.**

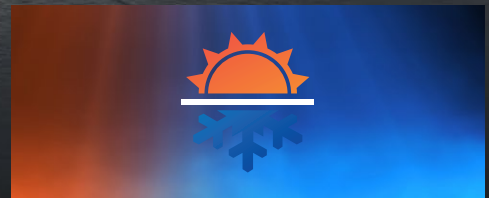
As a wear-resistant, slip proof and absolutely leak-proof surface coating.

**Impact protection made of anodised aluminium checker plate.**

On the inside walls of the box and rear door(s) approx. 1,200mm high, all-round

Surcharge only 875.- €\*

8



**COOLING UNIT IN TROPICAL VERSION UP TO 43°C**

Be prepared for persistent summer heat and use the high-performance cooling units in tropical version.

Surcharge only 500.-€\*

9

© EsseImann Fahrzeugbau GmbH & Co. KG

Subject to change without prior notice | Illustrations may contain special equipment.

\*The prices shown are net prices and do not include the statutory value-added tax. Delivery ex works. Offer subject to confirmation.  
Status October 2021

EsseImann Fahrzeugbau GmbH & Co. KG | Oberster Kamp 21 | 59069 Hamm | Germany  
+49 (0) 23 85 / 708 708-0 | [www.esselmann.de](http://www.esselmann.de) | [info@esselmann.de](mailto:info@esselmann.de)