



ESSELMANN

THE FT2.

THE ERGONOMIC COOLING TRAILER.

EASY TO MANOEUVRE WITH 2 METER INTERIOR
HEADROOM.



Always well chilled.

With **FePur®** isothermal body for optimal insulation and **SPLITCHILL®** cooling, the easy-to-maintain and repair-friendly refrigeration unit.

AS STANDARD WITH:

- ✓ electronic refrigeration control
- ✓ electric defrost heating
- ✓ ESSELMANN **SPLITCHILL®** cooling unit
- ✓ stable stainless steel rear portal with full loading width
- ✓ ESSELMANN **FePur®** isothermal body with robust anodised aluminium profiles and manoeuvring handles
- ✓ including registration documents [**CoC paper**]
- ✓ Space for two Euro pallets (1,200x800mm)

Overall outer dimensions:
approx. L/W/H 3,900 x 1,800 x 2,500 mm
Interior body dimensions:
approx. L/W/H 2,620 x 1,270 x 1,940 mm

Empty weight	approx.	630 kg
Perm. gross weight		1,500 kg
Payload in transport	approx.	870 kg
Payload in operation	approx.	4,000 kg

OPTIONALLY AVAILABLE:

- Increase to 1,500 kg permitted gross weight
- Tropical version of the refrigeration system, for use up to 43°C outside temperature
- load securing
- LED vehicle lighting
- Lettering in digital print full foiling on sides and rear
- 100 km/h preparation

from **5,980.- €***



ESSELMANN



LED vehicle lighting. More safety due to the bright and long-lasting LED lighting. No change of illuminant.

Surcharge only 265.- €*

1



100 km/h preparation

A more stable ride, thanks to 100 km/h preparation.

Surcharge only 200.- €*

2



Bumper protection made of stainless steel sheet.

for outline, marker and rear lights.

Surcharge only 155.- €*

3

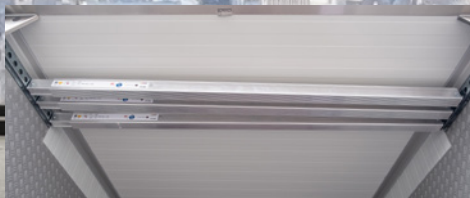


Preparation for load securing.

with 2 rows of perforated rails on both sides, transport bracket for locking bars under the inner ceiling.

Surcharge only 310.- €*

4



Locking bar for load securing.

105.- € per piece

5



Full-surface digital print lettering.

Stand out and label your trailer expressively.

Surcharge only 690.- €*

6

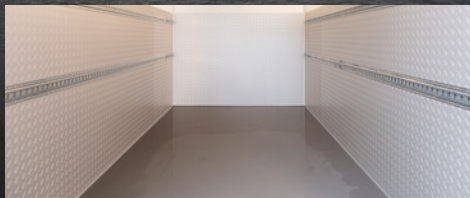


AL-KO Profi Premium jockey wheel.

with integrated wheel load scale, always have a firm view on the permissible support load.

Surcharge only 111.- €*

7



Synthetic floor coating. As a wear-resistant, slip-proof and absolutely leak-proof surface coating.

Impact protection made of anodised aluminium checker plate. On the inside walls of the box and rear door(s) approx. 1,200mm high, all-round

Surcharge only 830.- €*

8



Increase of capacity AL-KO chassis

Car ball head hitch, AL-KO Profi Premium jockey wheel with support strut, 2-fold tires, load capacity according to the perm. gross weight, perm. gross weight 1,500kg.

Surcharge only 195.- €*

9

© Helmut Esselmann GmbH & Co. KG

Subject to change without prior notice | Illustrations may contain special equipment.

*The prices shown are net prices and do not include the statutory value-added tax. Delivery ex works. Offer subject to confirmation. Status May 2021

Helmut Esselmann GmbH & Co. KG | Oberster Kamp 21 | 59069 Hamm | Germany
+49 (0) 23 85 / 708 708-0 | www.esselmann.de | info@esselmann.de